

# RIVERHOMES

37 Trowlock Island  
Teddington

£1,000,000  
Available



# 37 Trowlock Island Teddington

## KEY FEATURES

- Three bedroom detached cottage
- Access by chain ferry
- On the banks of the Thames
- 12 meter mooring
- Recently renovated
- 5 minutes from Teddington town centre
- Private island



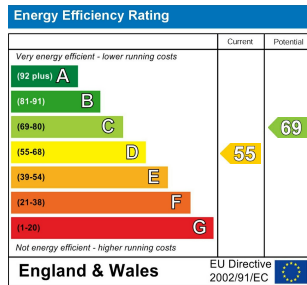


# 37 Trowlock Island Teddington

West London Branch  
28 Thames Road  
London  
W4 3RJ

020 8996 0600  
www.riverhomes.co.uk

## ENERGY PERFORMANCE CERTIFICATE



## KEY INFORMATION

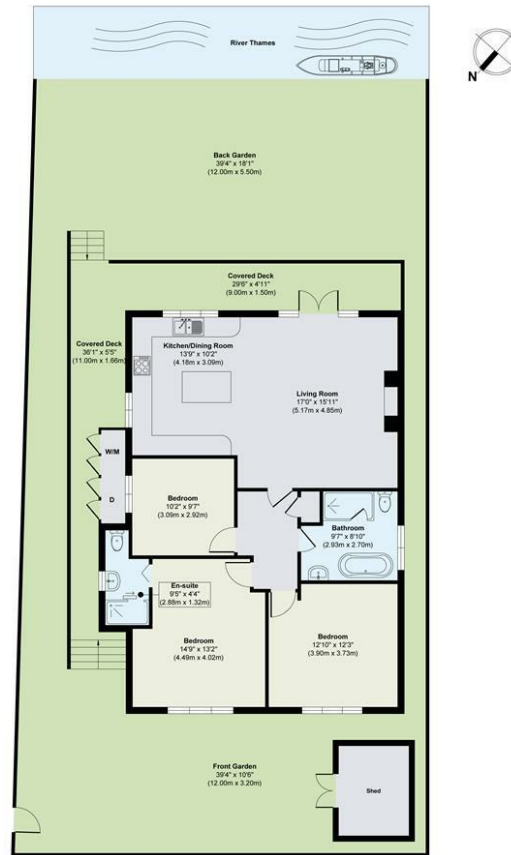
Local Authority: Richmond upon Thames

Internal Area: 1132.00 sq ft

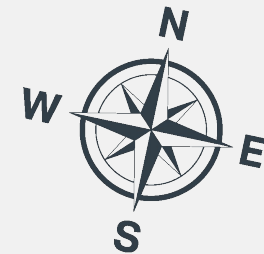
Garden Area: acre(s)

No of Bedrooms: 3

## TROWLOCK ISALND, TEDDINGTON TW11



Approx. Gross Internal Floor Area 1132 sq. ft / 97.20 sq. m (Excluding Shed)  
Illustration for identification purposes only, measurements are approximate, not to scale.



World Waterside Ltd trading as riverhomes for themselves and its clients give notice that 1: They are not authorised to make or give any representations or warranties in relation to the property either here or elsewhere, either on their own behalf or on behalf of their client or otherwise. 2: These particulars do not form part of any offer or contract and must not be relied upon as statements or representations of fact. Any areas, measurements or distances are approximate. The text, photographs and plans are for guidance only and are not necessarily comprehensive. 3: It should not be assumed that the property has all necessary planning, building regulation or other consents and any services, equipment or facilities have not been tested. 4: Lease details, service charges, ground rent (where applicable) and council tax are given as a guide only and should be checked and confirmed by your Solicitor prior to exchange of contracts. 5: They assume no responsibility and any intending purchasers or tenants must satisfy themselves by inspection or otherwise as to the correctness of each of the statements contained within these particulars. If you require clarification of any points please contact us.